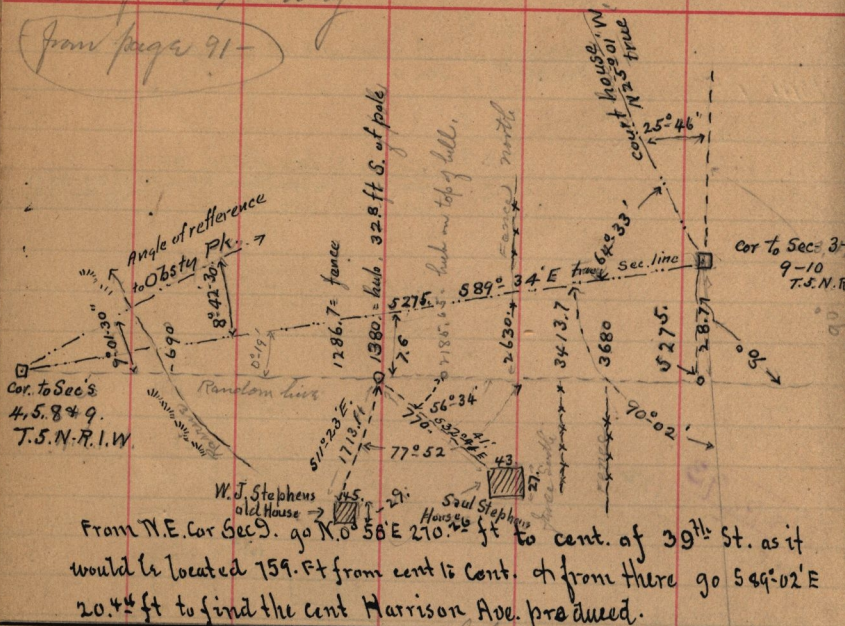


Stephens Survey  
 from page 91



Amended dedication of Lake View add  
 Aug 12-1839 - (3-2145) by Augustus B  
 Patton & wife. Plat Recorded in Book 2  
 page 234 Plat Book.

Plat Secs 445 T.S.N.R.I.W. Beg. 19.63 ch S.  
 of N.E. cor Sec 5. - N 89° 15' W 12.27 ch to center  
 of Main St. S 0° 58' W in center said St. 5.37 ch to  
 S 38° 21' W 34.76 ch S 51° 39' W 3.19 ch  
 E 9.9 ch N 4.52 ch N 89° 15' E 16.1 ch S 5.78 ch  
 E 11.05 ch S 7.45 ch W 14.29 ch S 130° W 5.90  
 ch S 43° 58' E 1.85 ch S 30° 46' E 17.37 ch  
 S 23° 38' E .08 ch E 18.17 ch to S.E. cor of S E 1/4  
 Sec 5. N 6.25 ch E 20. ch N 33.75 ch more  
 or less to 14 sec. line Sec 4. W 5.75 ch N 30. ch  
 W 9.25 ch S 10. ch W 5. ch to beg. This dedication is  
 amended Book 26. p. 62